

**WORLD COMMODITY PRICE DATA**  
**January 2011**

Commodity	Unit	Annual averages			Monthly averages			% change	
		2008	2009	2010	Dec2010	Jan2011	Jan2010	pre	same
<b>Energy</b>									
Crude oil, Brent	\$/bbl	97,64	61,86	79,64	91,80	96,29	76,37	4,9%	26,1%
Natural gas, Europe	\$/mmbtu	13,41	8,71	8,29	8,74	9,61	8,80	10,0%	9,2%
Natural gas, US	\$/mmbtu	8,86	3,95	4,39	4,24	4,49	5,81	6,0%	-22,6%
<b>Agriculture</b>									
<b>Food</b>									
<b>Fats and Oils</b>									
Palm oil	\$/mt	948,54	682,83	900,83	1.228,00	1.279,00	793,00	4,2%	61,3%
Soybean meal	\$/mt	424,42	407,69	378,31	433,00	452,00	404,00	4,4%	11,9%
Soybean oil	\$/mt	1.258,25	848,69	1.004,69	1.322,00	1.384,00	923,00	4,7%	49,9%
Soybeans	\$/mt	522,83	436,92	449,80	547,00	572,00	436,00	4,6%	31,2%
<b>Grains</b>									
Barley	\$/mt	200,52	128,32	158,39	189,64	195,20	146,54	2,9%	33,2%
Maize	\$/mt	223,12	165,51	185,91	250,38	264,95	167,31	5,8%	58,4%
Rice, Thai, 100% B	\$/mt	697,48	583,48	520,00	563,80	542,25	601,00	-3,8%	-9,8%
Sorghum	\$/mt	207,83	151,05	165,40	221,57	246,32	161,79	11,2%	52,2%
Wheat, Canada	\$/mt	454,59	300,52	312,39	408,88	440,49	287,21	7,7%	53,4%
Wheat, US, HRW	\$/mt	326,03	224,07	223,58	306,52	326,56	201,19	6,5%	62,3%
Wheat US SRW	\$/mt	271,52	185,95	229,68	308,65	320,40	198,78	3,8%	61,2%
<b>Other Food</b>									
Bananas EU	\$/mt	1.187,71	1.144,90	1.002,24	1.062,14	1.196,77	941,31	12,7%	27,1%
Bananas US	\$/mt	844,21	847,14	868,32	899,79	892,21	785,42	-0,8%	13,6%
Meat, beef	c/kg	313,80	263,65	335,15	374,42	409,69	295,14	9,4%	38,8%
Meat, chicken	c/kg	169,62	171,65	172,06	171,10	170,39	166,38	-0,4%	2,4%
Meat, sheep	c/kg	458,51	427,65	499,51	562,76	568,35	448,78	1,0%	26,6%
Butter, Oceania	\$/mt	3.607,33	2.335,25	4.042,75	4.500,00	4.625,00	3.800,00	2,8%	21,7%
Cheddar Cheese, O	\$/mt	4.633,42	2.957,42	4.009,50	4.175,00	4.375,00	4.200,00	4,8%	4,2%
Skim Milk Powder, \$	\$/mt	3.278,17	2.253,83	3.126,75	3.075,00	3.500,00	3.063,00	13,8%	14,3%
Whole Milk Powder	\$/mt	3.845,83	2.401,58	3.464,25	3.550,00	3.800,00	3.300,00	7,0%	15,2%
Oranges	\$/mt	1.107,31	909,04	1.033,20	723,89	734,61	1.089,47	1,5%	-32,6%
Sugar EU domestic	c/kg	69,69	52,44	44,18	43,19	43,67	47,81	1,1%	-8,7%
Sugar US domestic	c/kg	46,86	54,88	79,25	84,69	84,79	86,77	0,1%	-2,3%
Sugar, world	c/kg	28,21	40,00	46,93	61,69	65,28	58,36	5,8%	11,9%
<b>Raw Materials</b>									
Cotton A Index	c/kg	157,39	138,20	228,34	370,34	394,47	170,64	6,5%	131,2%
<b>Fertilizers</b>									
DAP	\$/mt	967,20	323,05	500,68	593,90	595,75	427,50	0,3%	39,4%
Phosphate rock	\$/mt	345,59	121,66	123,02	140,00	155,00	97,50	10,7%	59,0%
Potassium chloride	\$/mt	570,12	630,43	331,87	354,00	367,50	354,38	3,8%	3,7%
TSP	\$/mt	879,38	257,42	381,89	472,50	475,00	296,25	0,5%	60,3%
Urea, E. Europe, bu	\$/mt	492,73	249,57	288,59	375,10	374,13	275,75	-0,3%	35,7%
<b>Exchange rate</b>									
Euro area	\$	1,47	1,39	1,33	1,32	1,34	1,43	1,1%	-6,4%*

\$ = US dollar    ¢ = US cent    bbl = barrel    mmbtu = million British thermal units    kg = kilogram    mt = metric ton    n.a. = not available  
 n.q. = no quotation    same = Percentage change compared to corresponding period of the previous year  
 pre = Percentage change on previous period

\* A positive change denotes an appreciation of the euro

## Description of Price Series

Crude oil (spot), U.K. Brent 38` API, f.o.b. U.K ports  
Natural Gas (Europe), average import border price, including UK. Between June 2000 - March 2010 excludes UK. As of April 2010 includes a spot price component.  
Natural Gas (U.S.), spot price at Henry Hub, Louisiana

Palm oil (Malaysian), 5% bulk, c.i.f. N. W. Europe  
Soybean meal (any origin), Argentine 45/46% extraction, c.i.f. Rotterdam; prior to 1990, US 44%  
Soybean oil (Dutch), crude, f.o.b. ex-mill  
Soybeans (US), c.i.f. Rotterdam

Barley (Canadian), feed, Western No. 1, Winnipeg Commodity Exchange, spot, wholesale farmers' price  
Maize (US), no. 2, yellow, f.o.b. US Gulf ports  
Rice (Thai), 100% B second grade, f.o.b. Bangkok (Wednesday)  
Sorghum (US), no. 2 milo yellow, f.o.b. Gulf ports  
Wheat (Canadian), no. 1, Western Red Spring (CWRS), in store, St. Lawrence, export price  
Wheat (US), no. 1, hard red winter, ordinary protein, export price delivered at the Gulf port for prompt or 30 days shipment  
Wheat (US), no. 2, soft red winter, export price delivered at the Gulf port for prompt or 30 days shipment

Bananas (Central & South American), major brands, c.i.f. Hamburg  
Bananas (Central & South American), major brands, US import price, free on truck (f.o.t.) US Gulf ports  
Meat, beef (Australian/New Zealand), up to October 2002, cow forequarters, frozen boneless, 85% chemical lean, c.i.f. U.S. port (East Coast), ex-dock;  
from November, 2002 onwards chucks and cow forequarters  
Meat, chicken (US), broiler/fryer, whole birds, 2-1/2 to 3 pounds, USDA grade "A", ice-packed, Georgia Dock preliminary weighted average, wholesale  
Meat, sheep (New Zealand), frozen whole carcasses Prime Medium (PM) beginning January 2006, wholesale, Smithfield, London  
Butter (Oceania, indicative export prices, f.o.b.) Average of mid-point of price ranges reported bi-weekly by Dairy Market News (USDA)  
Cheddar Cheese (Oceania, indicative export prices, f.o.b.) Average of mid-point of price ranges reported bi-weekly by Dairy Market News (USDA)  
Skim Milk Powder (Oceania, indicative export prices, f.o.b.) Average of mid-point of price ranges reported bi-weekly by Dairy Market News (USDA)  
Whole Milk Powder (Oceania, indicative export prices, f.o.b.) Average of mid-point of price ranges reported bi-weekly by Dairy Market News (USDA)  
Oranges (Mediterranean exporters) navel, EEC indicative import price, c.i.f. Paris  
Sugar (EU), European Union negotiated import price for raw unpackaged sugar from African, Caribbean and Pacific (ACP) under Lome Conventions, c.i.f. European ports  
Sugar (US), import price, nearest future, c.i.f. New York  
Sugar (world), International Sugar Agreement (ISA) daily price, raw, f.o.b. and stowed at greater Caribbean ports

Cotton (Cotton Outlook "CotlookA index"), middling 1-3/32 inch, traded in Far East, C/F starting 2006; for prior years Northern Europe, c.i.f.

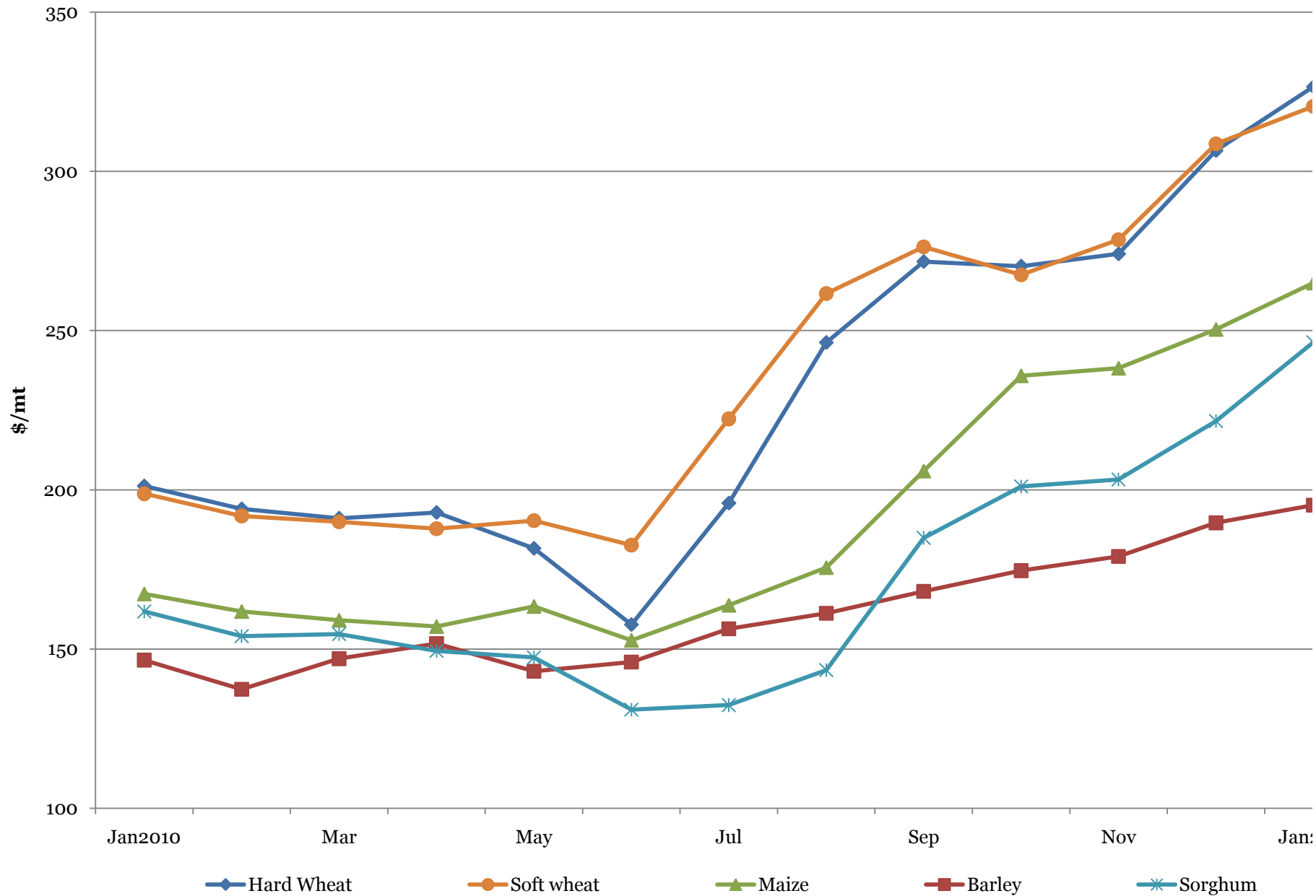
DAP (diammonium phosphate), standard size, bulk, spot, f.o.b. US Gulf  
Phosphate rock (Moroccan), 70% BPL, contract, f.a.s. Casablanca  
Potassium chloride (muriate of potash), standard grade, spot, f.o.b. Vancouver  
TSP (triple superphosphate), up to September 2006 bulk, spot, f.o.b. US Gulf; from October 2006 onwards Tunisian, granular, f.o.b.  
Urea, (Black Sea), bulk, spot, for 1985-91 (June) f.o.b. Eastern Europe; 1991 (July) onwards f.o.b. Black Sea (primarily Yuzhnyy)

Bilateral US dollar-euro exchange rate, monthly averages

Forecasts were prepared December 14, 2010 by the Development Prospects Group, World Bank.

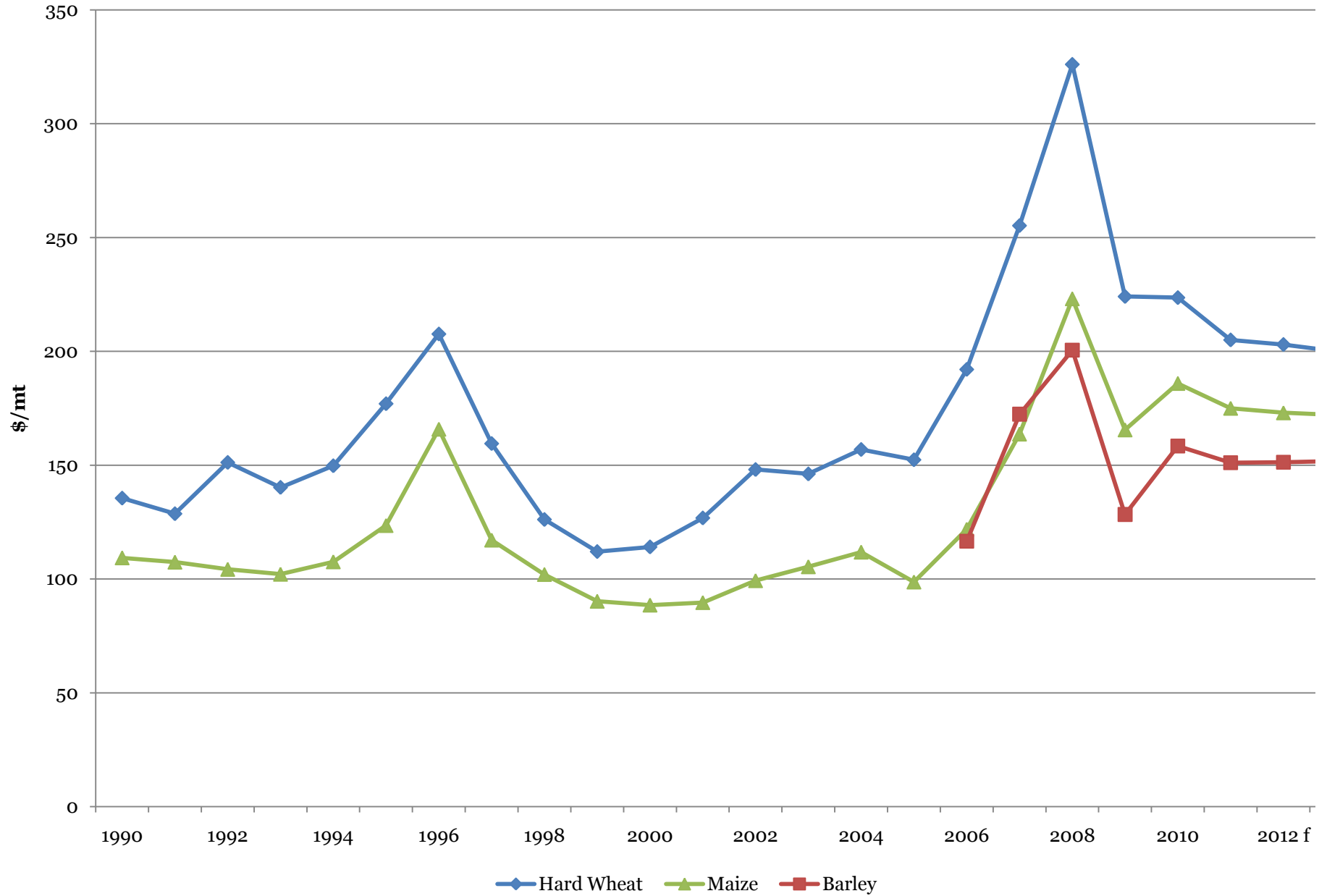
# World Cereal Prices

Monthly averages, current prices



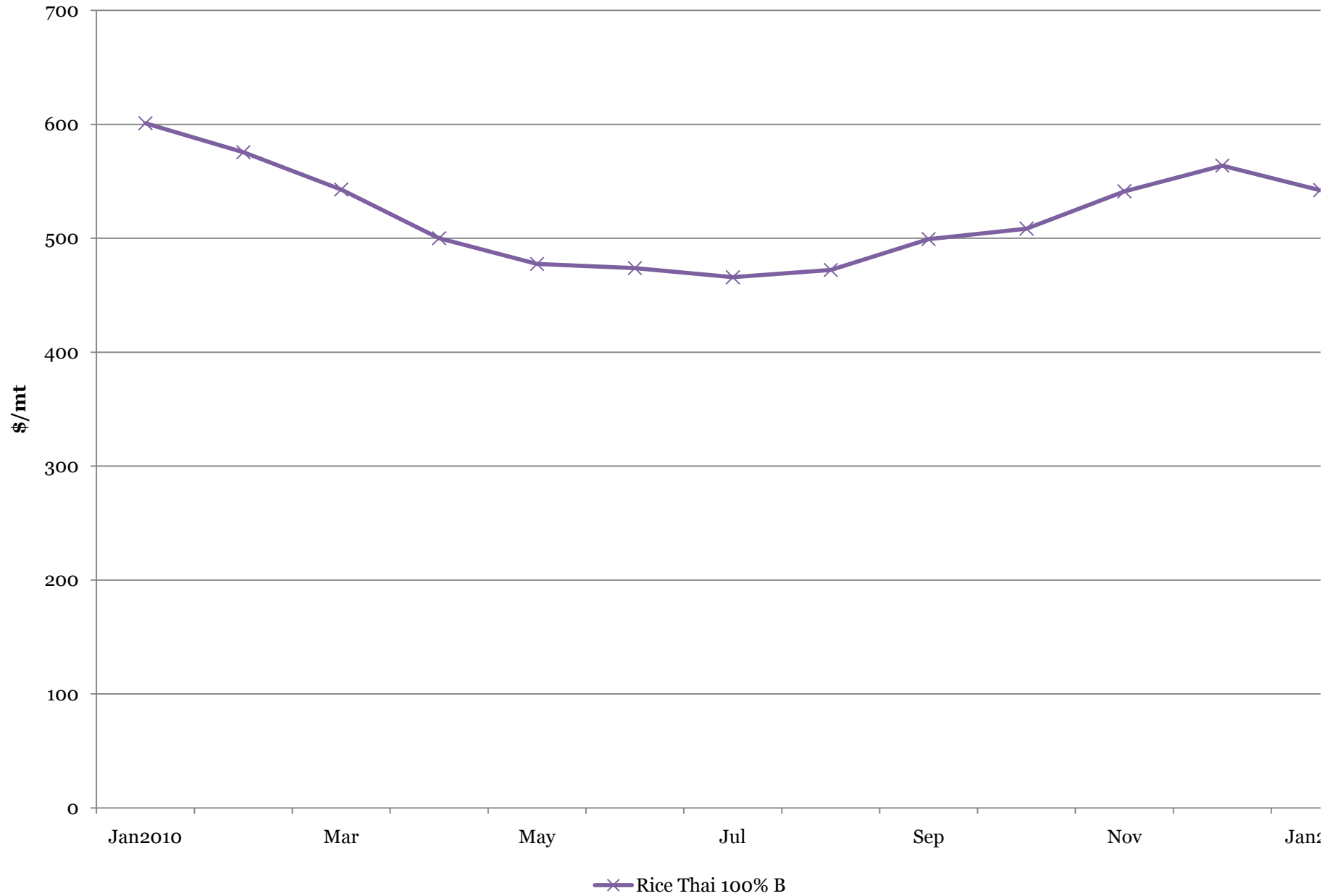
# World Cereal Prices and Forecasts

Annual averages, current prices



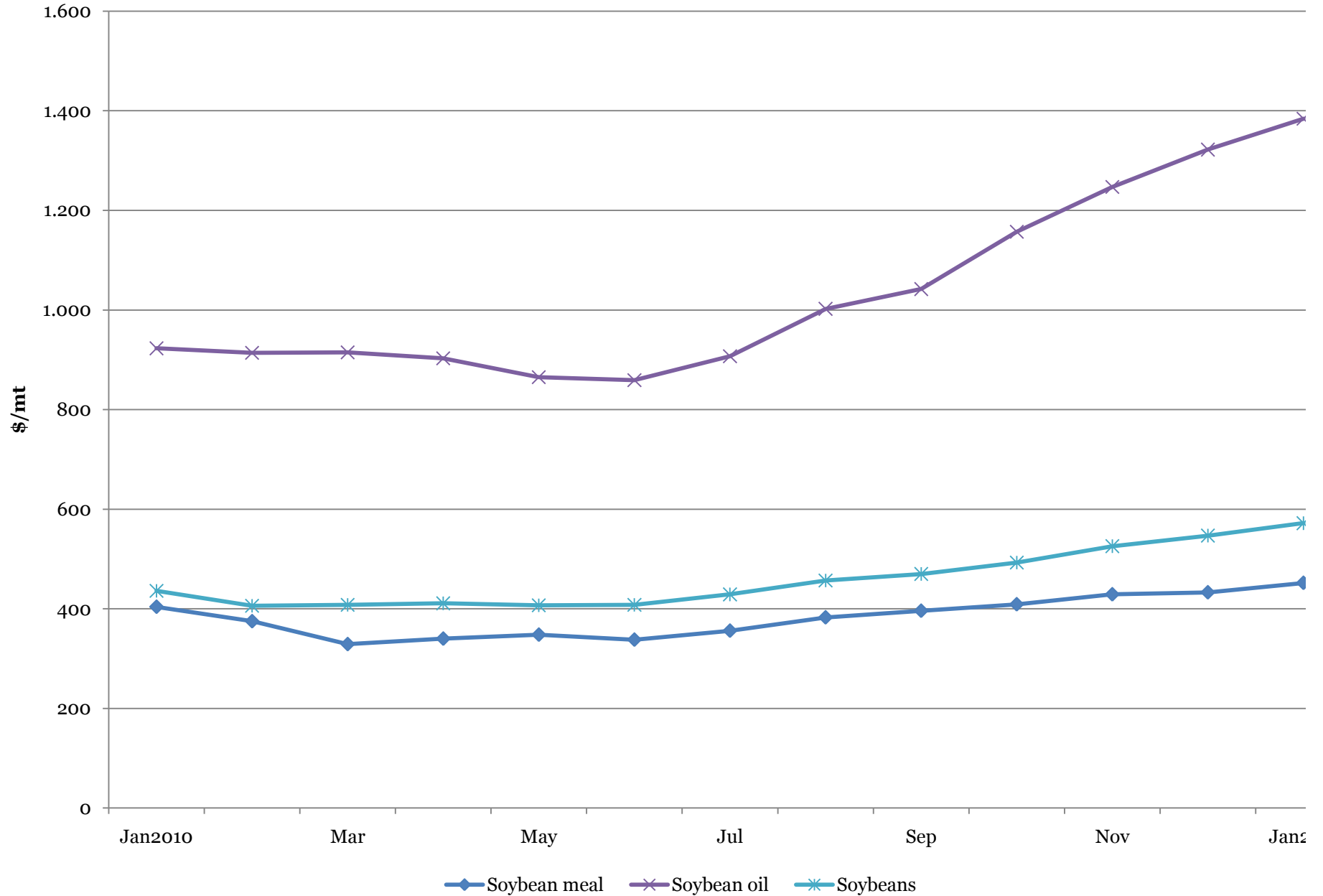
# World Rice Prices

Monthly averages, current prices



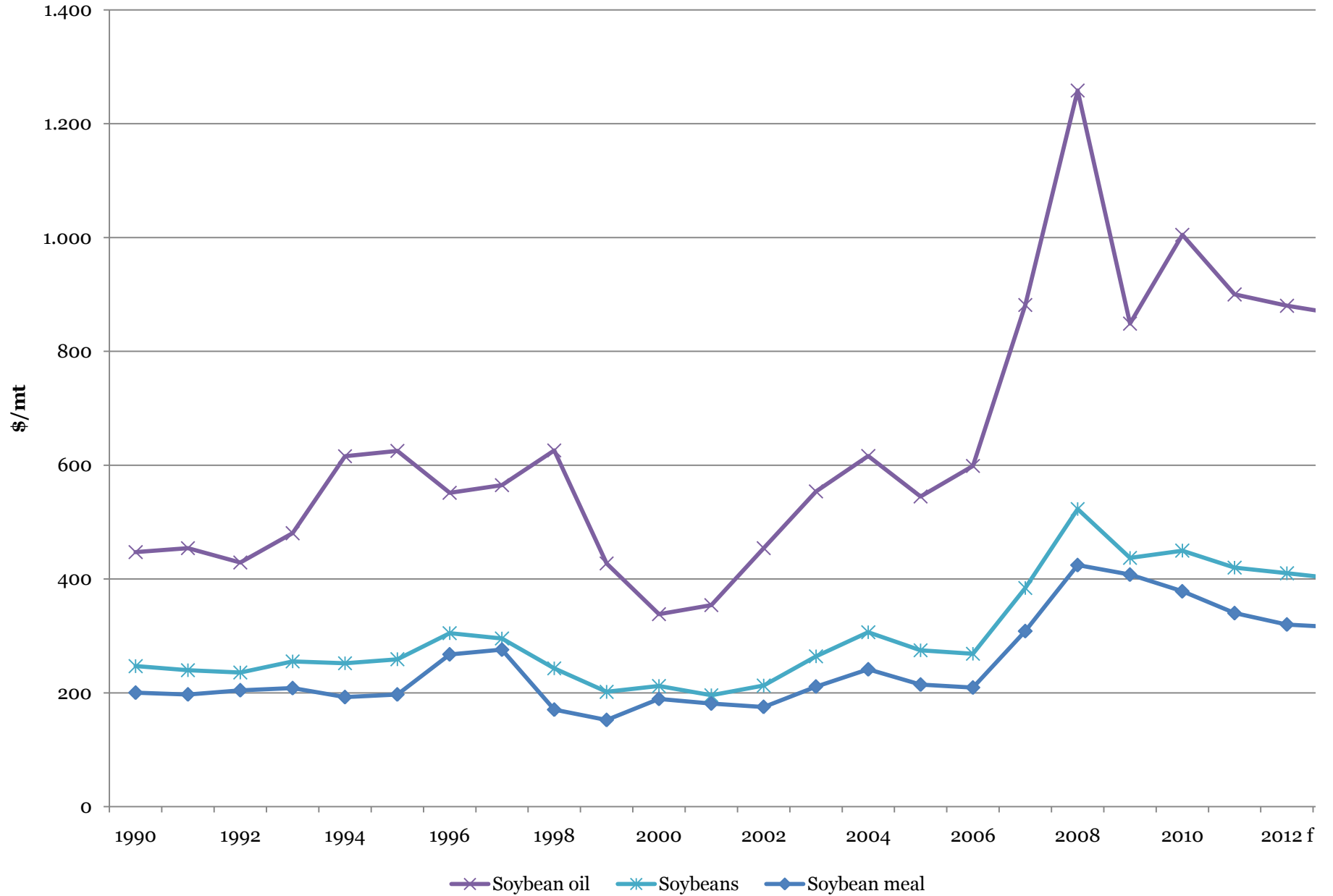
# World Soybean Prices

Monthly averages, current prices



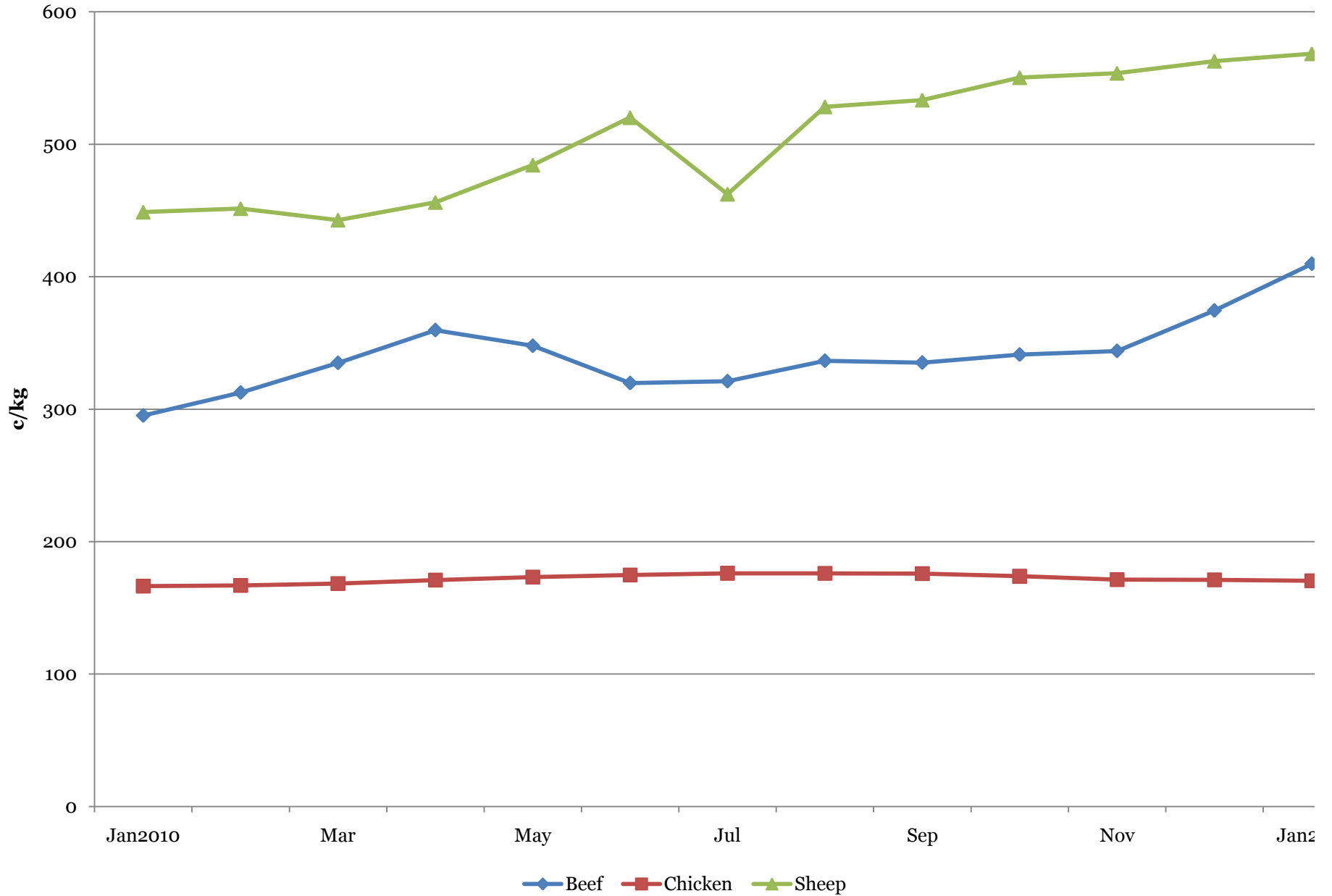
# World Soybean Prices and Forecasts

Annual averages, current prices



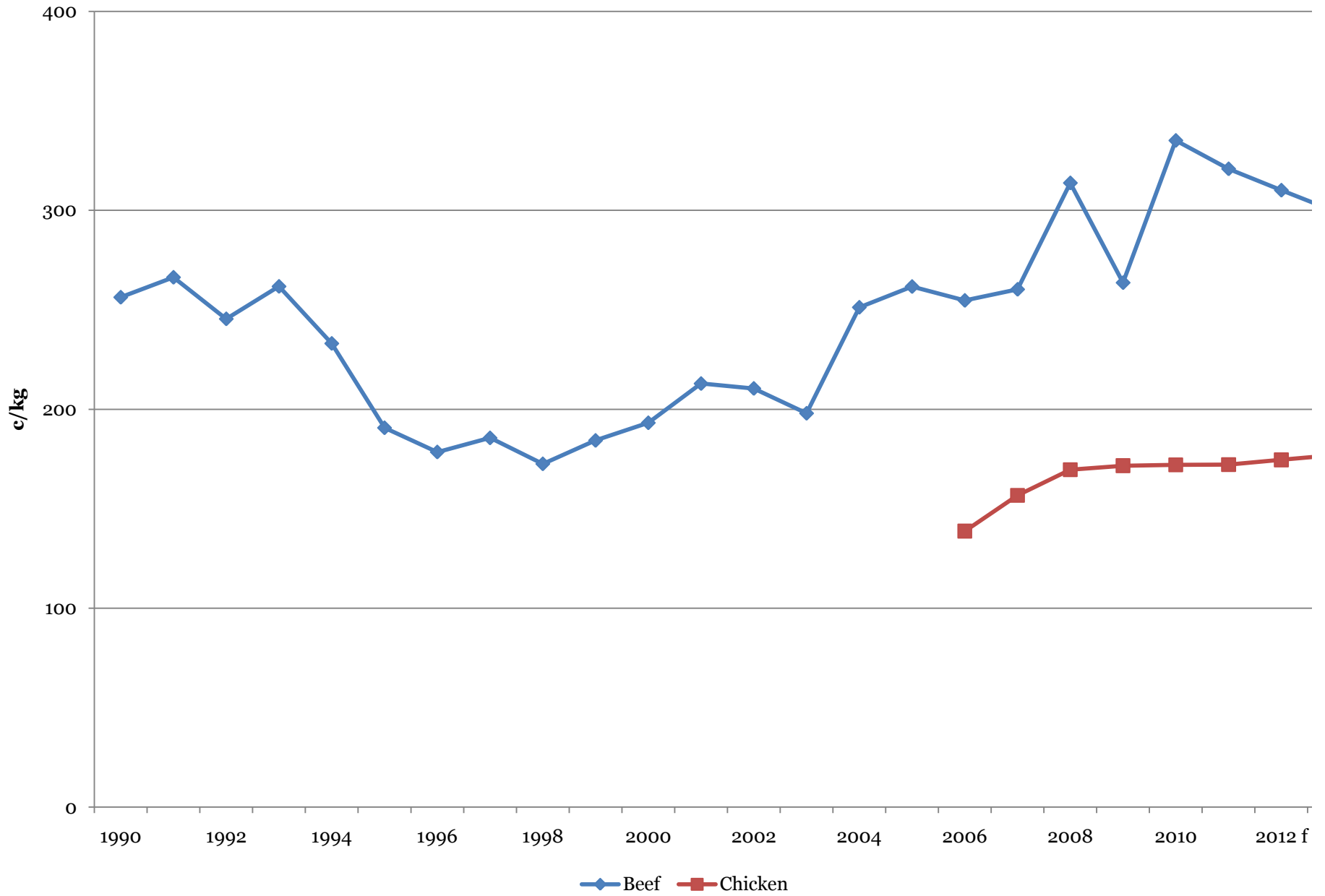
# World Meat Prices

Monthly averages, current prices



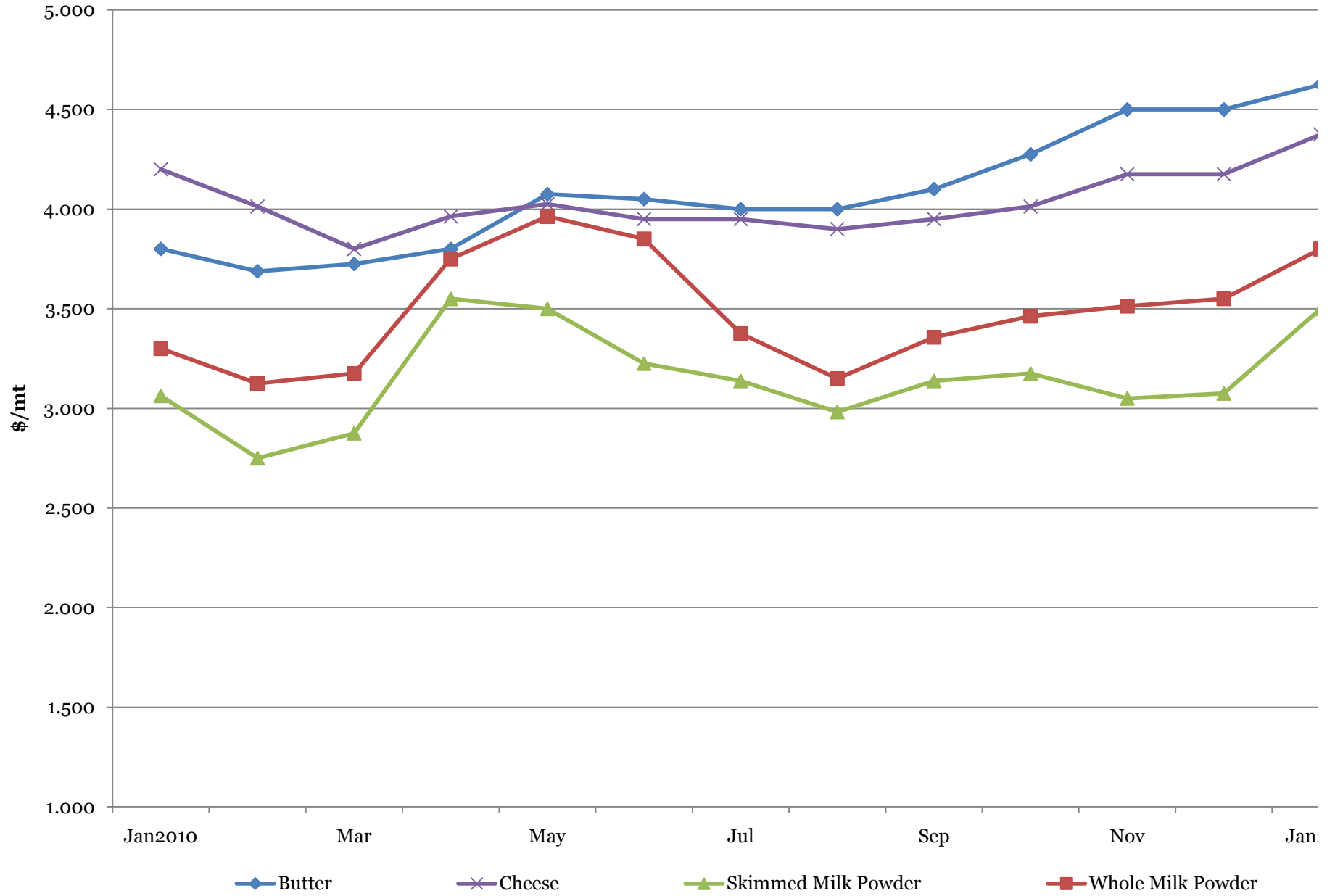
# World Meat Prices and Forecasts

Annual averages, current prices



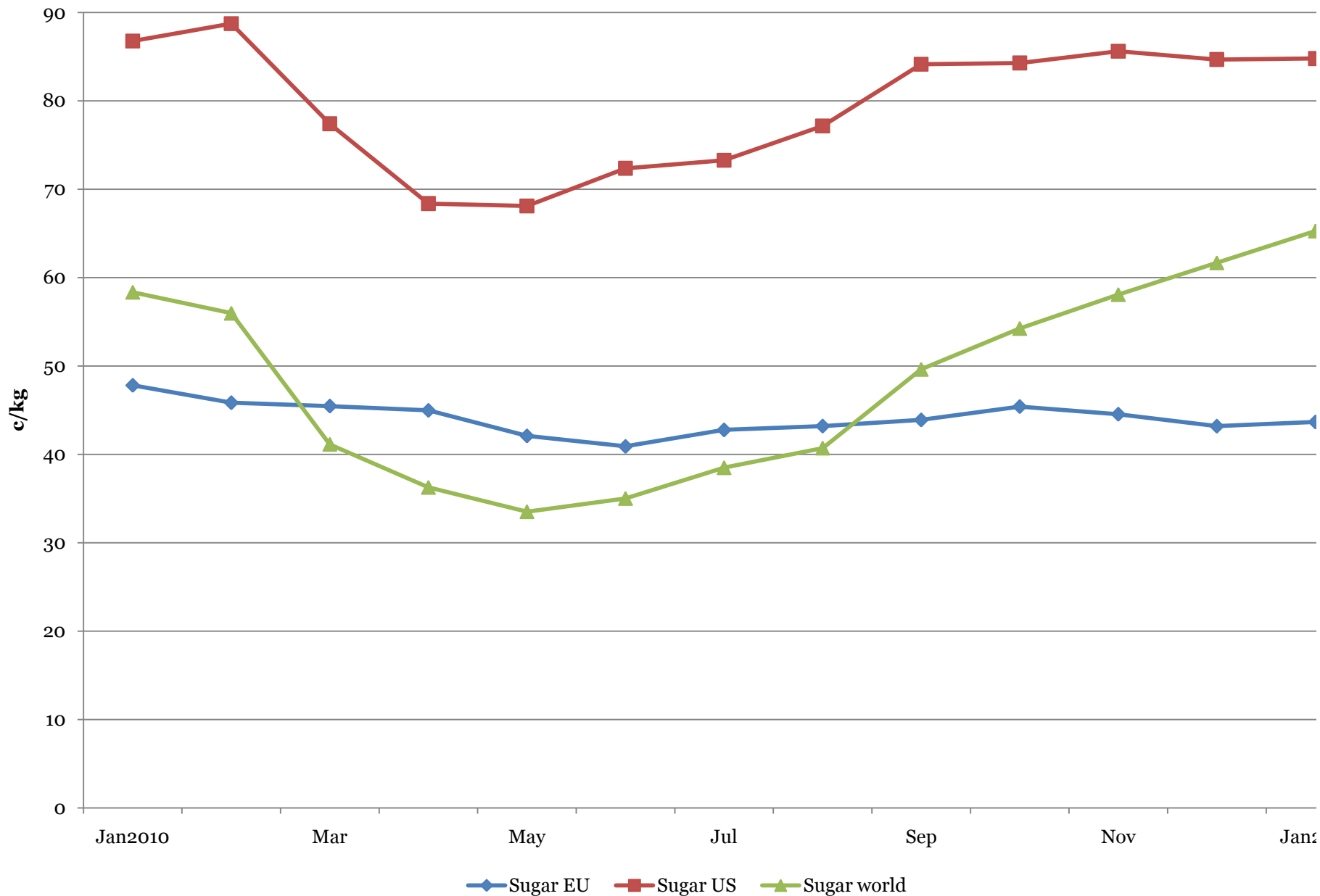
# World Dairy Prices

Monthly averages, current prices



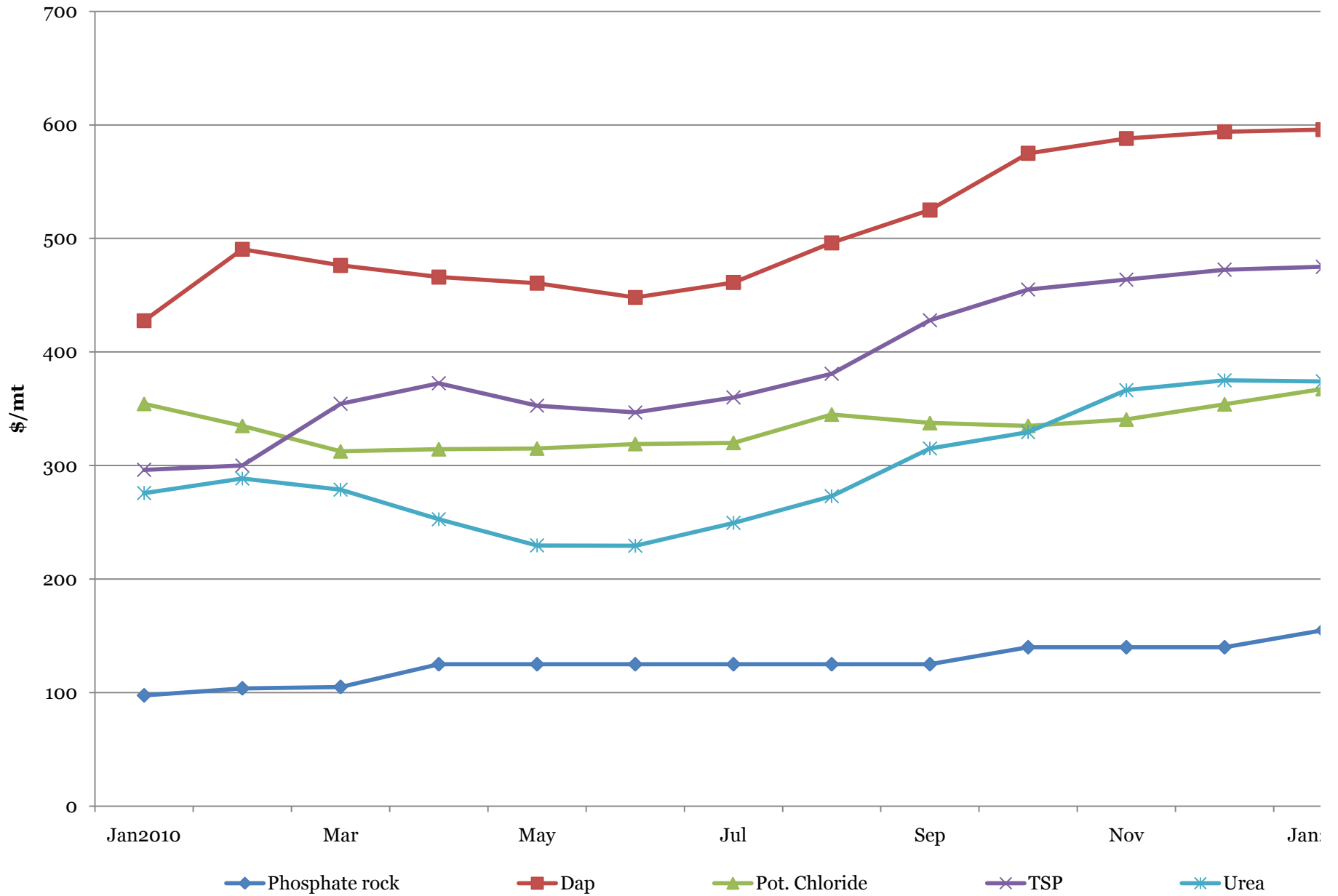
# World Sugar Prices

Monthly averages, current prices



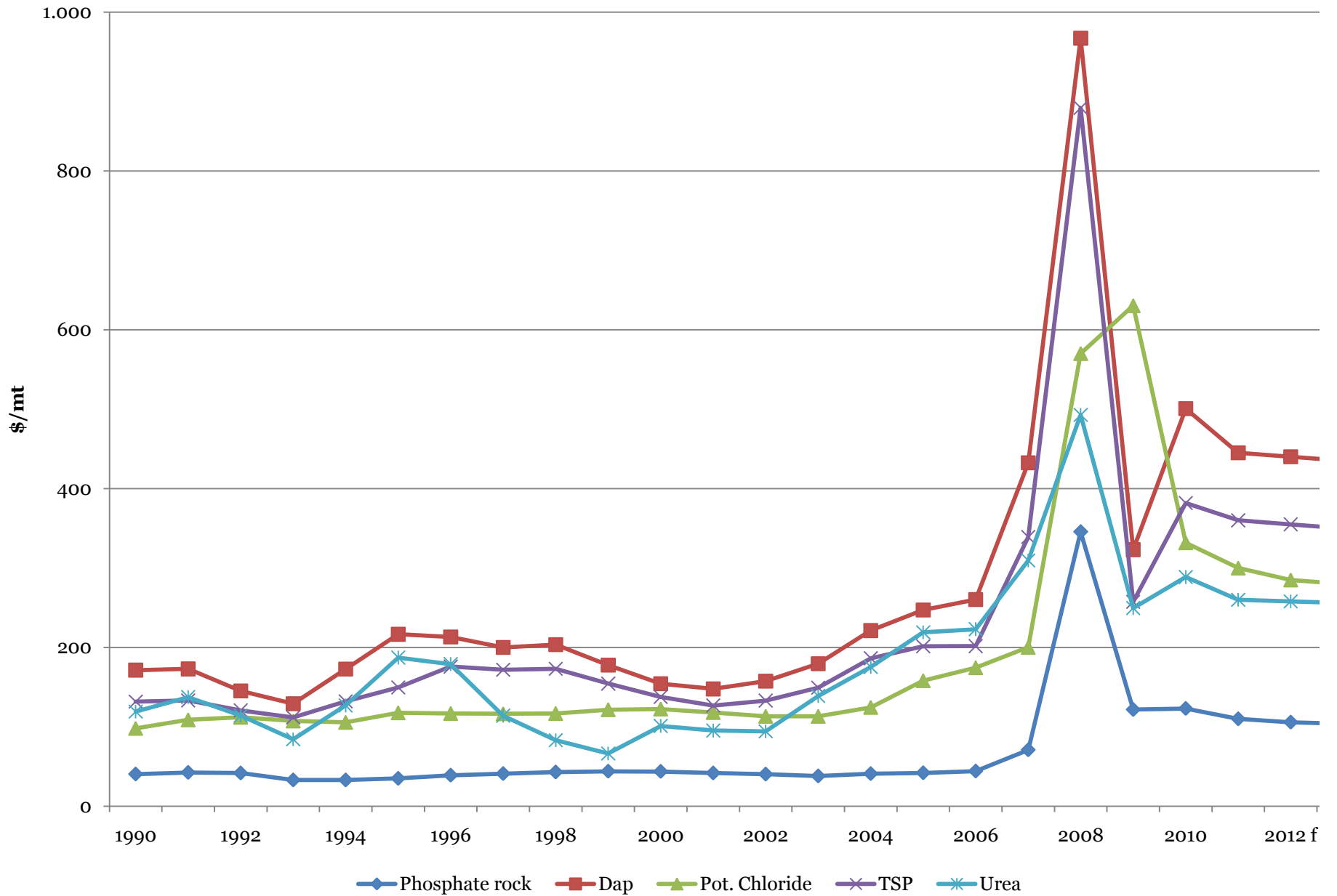
# World Fertiliser Prices

Monthly averages, current prices



# World Fertiliser Prices and Forecasts

Annual averages, current prices



# Crude oil Price

Monthly averages, current prices

