

WORLD COMMODITY PRICE DATA
May 2010

Commodity	Unit	Annual averages			Monthly averages			% change	
		2007	2008	2009	Apr 2010	May 2010	May 2009	pre	same
Energy									
Crude oil, Brent	\$/bbl	72,70	97,64	61,86	84,98	76,25	57,94	-10,3%	31,6%
Natural gas, Europe	\$/mmbtu	8,56	13,41	8,71	7,52	7,63	8,09	1,5%	-5,7%
Natural gas, US	\$/mmbtu	6,98	8,86	3,95	4,01	4,16	3,81	3,7%	9,1%
Agriculture									
Food									
Fats and Oils									
Palm oil	\$/mt	780,25	948,54	682,83	830,00	813,30	801,00	-2,0%	1,5%
Soybean meal	\$/mt	308,37	424,42	407,69	340,00	349,30	437,00	2,7%	-20,1%
Soybean oil	\$/mt	881,43	1.258,25	848,69	903,00	864,00	892,00	-4,3%	-3,1%
Soybeans	\$/mt	384,05	522,83	436,92	411,00	406,00	465,00	-1,2%	-12,7%
Grains									
Barley	\$/mt	172,38	200,52	128,32	151,71	143,04	128,70	-5,7%	11,1%
Maize	\$/mt	163,66	223,12	165,51	157,08	163,38	179,91	4,0%	-9,2%
Rice, Thai, 100% B	\$/mt	334,45	697,48	583,48	500,00	477,50	558,60	-4,5%	-14,5%
Sorghum	\$/mt	162,69	207,83	151,05	149,41	147,35	160,08	-1,4%	-8,0%
Wheat, Canada	\$/mt	300,37	454,59	300,52	264,74	256,69	334,56	-3,0%	-23,3%
Wheat, US, HRW	\$/mt	255,21	326,03	224,07	192,87	181,61	262,34	-5,8%	-30,8%
Wheat, US, SRW	\$/mt	238,59	271,52	185,95	187,76	190,33	202,46	1,4%	-6,0%
Other Food									
Bananas EU	\$/mt	1.037,01	1.187,71	1.144,90	1.051,43	998,99	1.286,24	-5,0%	-22,3%
Bananas US	\$/mt	675,81	844,21	847,14	825,04	799,20	830,20	-3,1%	-3,7%
Meat, beef	c/kg	260,30	313,80	263,65	359,63	347,78	263,67	-3,3%	31,9%
Meat, chicken	c/kg	156,72	169,62	171,65	170,89	173,27	174,49	1,4%	-0,7%
Meat, sheep	c/kg	411,96	458,51	427,65	456,10	451,26	427,71	-1,1%	5,5%
Butter, Oceania	\$/mt	2.959,17	3.607,33	1.945,56	3.800,00	3.925,00	1.900,00	3,3%	106,6%
Cheddar Cheese, Oceania	\$/mt	4.055,33	4.633,42	2.620,89	3.900,00	4.012,50	2.575,00	2,9%	55,8%
Skim Milk Powder, Oceania	\$/mt	4.290,67	3.278,17	1.978,67	3.250,00	3.575,00	2.000,00	10,0%	78,8%
Whole Milk Powder, Oceania	\$/mt	4.184,50	3.845,83	2.099,33	3.500,00	3.912,50	2.200,00	11,8%	77,8%
Oranges	\$/mt	956,68	1.107,31	909,04	994,73	1.049,36	888,11	5,5%	18,2%
Sugar EU domestic	c/kg	68,09	69,69	52,44	44,98	42,10	53,84	-6,4%	-21,8%
Sugar US domestic	c/kg	45,77	46,86	54,88	68,38	68,11	47,68	-0,4%	42,9%
Sugar, world	c/kg	22,22	28,21	40,00	36,27	33,51	35,36	-7,6%	-5,2%
Raw Materials									
Cotton A Index	c/kg	139,52	157,39	138,20	194,18	198,57	136,28	2,3%	45,7%
Cotton Memphis	c/kg	142,92	161,29	145,25	198,53	199,10	150,16	0,3%	32,6%
Fertilizers									
DAP	\$/mt	432,55	967,20	323,05	466,00	460,63	297,50	-1,2%	54,8%
Phosphate rock	\$/mt	70,93	345,59	121,66	125,00	125,00	117,50	0,0%	6,4%
Potassium chloride	\$/mt	200,16	570,12	630,43	314,38	315,00	717,50	0,2%	-56,1%
TSP	\$/mt	339,05	879,38	257,42	372,50	353,75	245,00	-5,0%	44,4%
Urea, E. Europe, bulk	\$/mt	309,40	492,73	249,57	252,70	229,63	240,75	-9,1%	-4,6%
Exchange rate									
Euro area	\$	1,37	1,47	1,39	1,34	1,26	1,37	-6,3%	-7,9%*

\$ = US dollar ¢ = US cent bbl = barrel mmbtu = million British thermal units kg = kilogram mt = metric ton n.a. = not available
 n.q. = no quotation same = Percentage change compared to corresponding period of the previous year
 pre = Percentage change on previous period

* A positive change denotes an appreciation of the euro

Description of Price Series

Crude oil (spot), U.K. Brent 38` API, f.o.b. U.K ports
Natural Gas (Europe), average import border price, including UK. As of April 2010 includes a spot price component. Between June 2000 - March 2010 excludes UK
Natural Gas (U.S.), spot price at Henry Hub, Louisiana

Palm oil (Malaysian), 5% bulk, c.i.f. N. W. Europe
Soybean meal (any origin), Argentine 45/46% extraction, c.i.f. Rotterdam; prior to 1990, US 44%
Soybean oil (Dutch), crude, f.o.b. ex-mill
Soybeans (US), c.i.f. Rotterdam

Barley (Canadian), feed, Western No. 1, Winnipeg Commodity Exchange, spot, wholesale farmers' price
Maize (US), no. 2, yellow, f.o.b. US Gulf ports
Rice (Thai), 100% B second grade, f.o.b. Bangkok (Wednesday)
Sorghum (US), no. 2 milo yellow, f.o.b. Gulf ports
Wheat (Canadian), no. 1, Western Red Spring (CWRS), in store, St. Lawrence, export price
Wheat (US), no. 1, hard red winter, ordinary protein, export price delivered at the Gulf port for prompt or 30 days shipment
Wheat (US), no. 2, soft red winter, export price delivered at the Gulf port for prompt or 30 days shipment

Bananas (Central & South American), major brands, c.i.f. Hamburg
Bananas (Central & South American), major brands, US import price, free on truck (f.o.t.) US Gulf ports
Meat, beef (Australian/New Zealand), up to October 2002, cow forequarters, frozen boneless, 85% chemical lean, c.i.f. U.S. port (East Coast), ex-dock;
from November, 2002 onwards chucks and cow forequarters
Meat, chicken (US), broiler/fryer, whole birds, 2-1/2 to 3 pounds, USDA grade "A", ice-packed, Georgia Dock preliminary weighted average, wholesale
Meat, sheep (New Zealand), frozen whole carcasses Prime Medium (PM) beginning January 2006, wholesale, Smithfield, London
Butter (Oceania, indicative export prices, f.o.b.) Average of mid-point of price ranges reported bi-weekly by Dairy Market News (USDA)
Cheddar Cheese (Oceania, indicative export prices, f.o.b.) Average of mid-point of price ranges reported bi-weekly by Dairy Market News (USDA)
Skim Milk Powder (Oceania, indicative export prices, f.o.b.) Average of mid-point of price ranges reported bi-weekly by Dairy Market News (USDA)
Whole Milk Powder (Oceania, indicative export prices, f.o.b.) Average of mid-point of price ranges reported bi-weekly by Dairy Market News (USDA)
Oranges (Mediterranean exporters) navel, EEC indicative import price, c.i.f. Paris
Sugar (EU), European Union negotiated import price for raw unpackaged sugar from African, Caribbean and Pacific (ACP) under Lome Conventions, c.i.f. European ports
Sugar (US), import price, nearest future, c.i.f. New York
Sugar (world), International Sugar Agreement (ISA) daily price, raw, f.o.b. and stowed at greater Caribbean ports

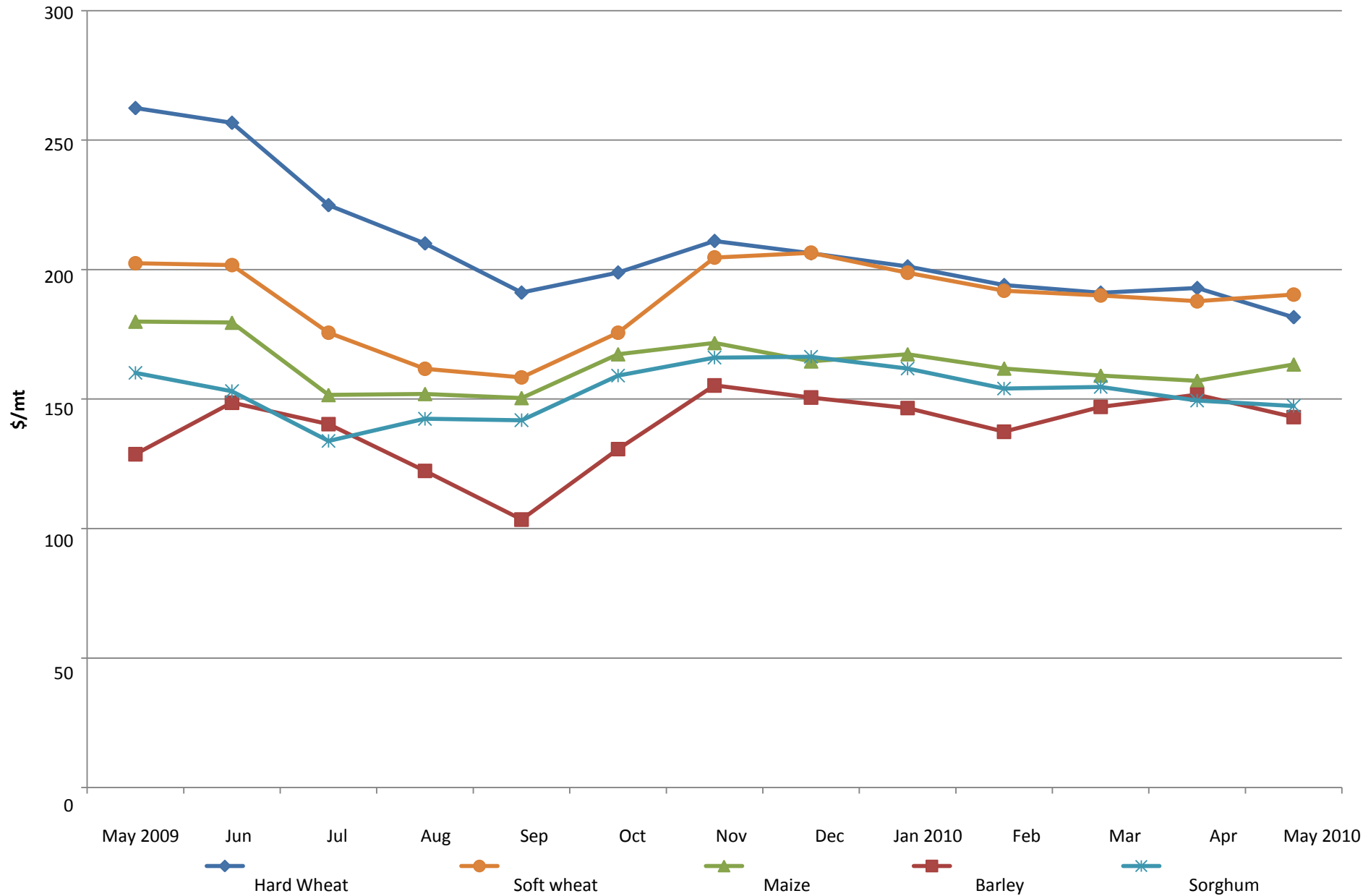
Cotton (Cotton Outlook "CotlookA index"), middling 1-3/32 inch, traded in Far East, C/F starting 2006; for prior years Northern Europe, c.i.f.
Cotton (US), Memphis/Eastern, middling 1-3/32 inch, c.i.f. Northern Europe, one of the 15 styles based on which the Cotlook A Index is computed

DAP (diammonium phosphate), standard size, bulk, spot, f.o.b. US Gulf
Phosphate rock (Moroccan), 70% BPL, contract, f.a.s. Casablanca
Potassium chloride (muriate of potash), standard grade, spot, f.o.b. Vancouver
TSP (triple superphosphate), up to September 2006 bulk, spot, f.o.b. US Gulf; from October 2006 onwards Tunisian, granular, f.o.b.
Urea, (Black Sea), bulk, spot, for 1985-91 (June) f.o.b. Eastern Europe; 1991 (July) onwards f.o.b. Black Sea (primarily Yuzhnyy)

Bilateral US dollar-euro exchange rate, monthly averages

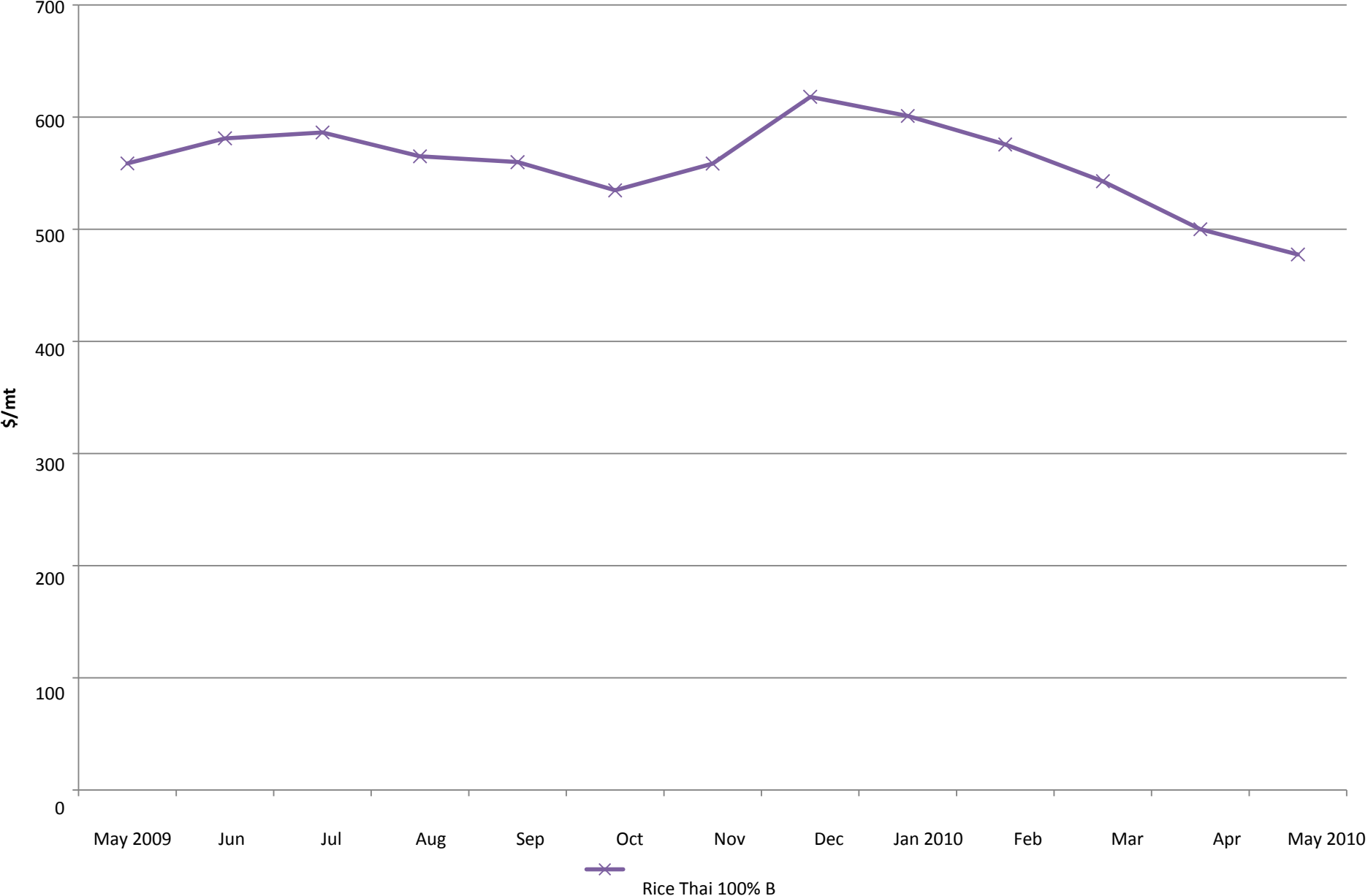
World Cereal Prices

Monthly averages, current prices



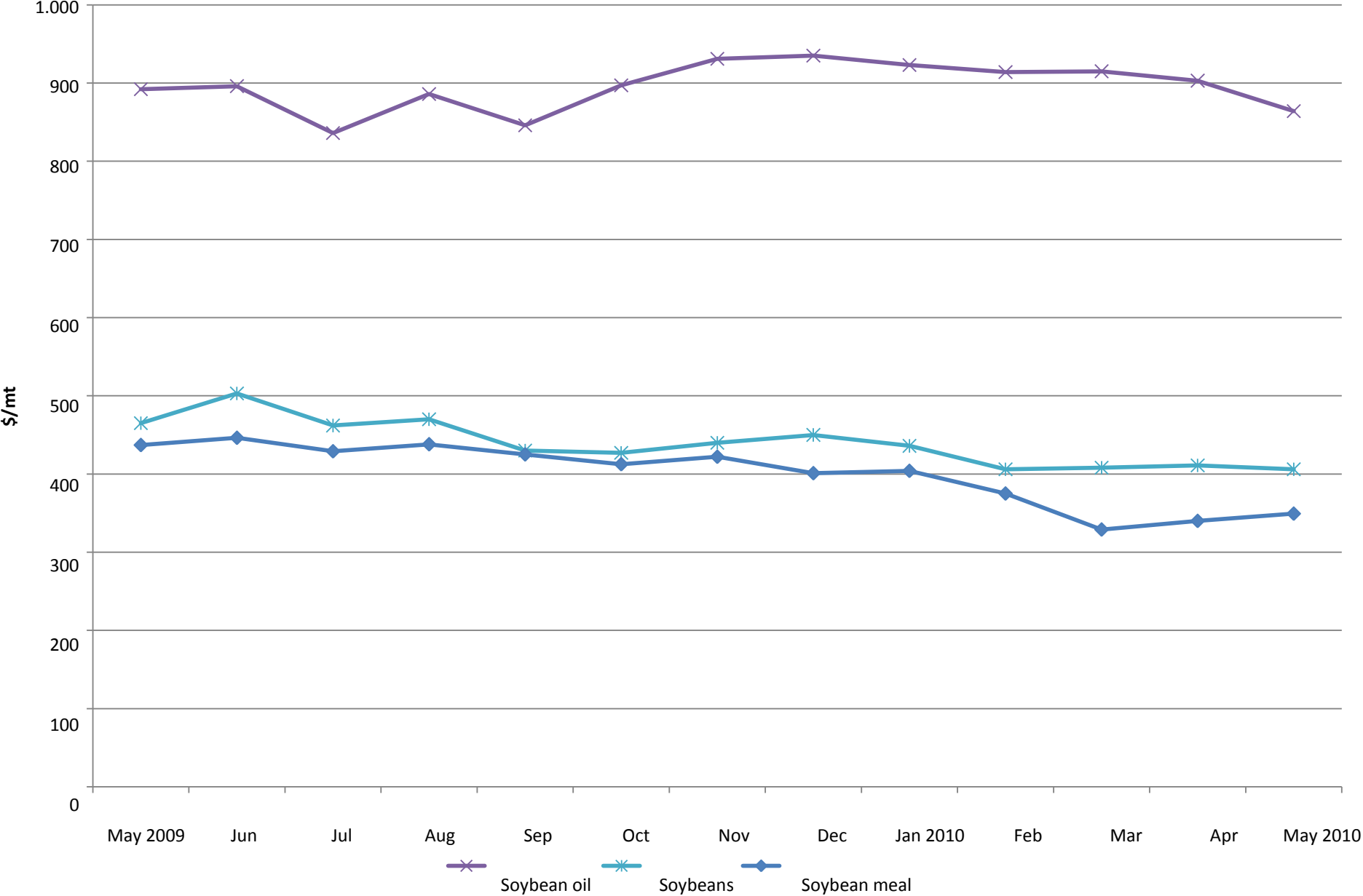
World Rice Prices

Monthly averages, current prices



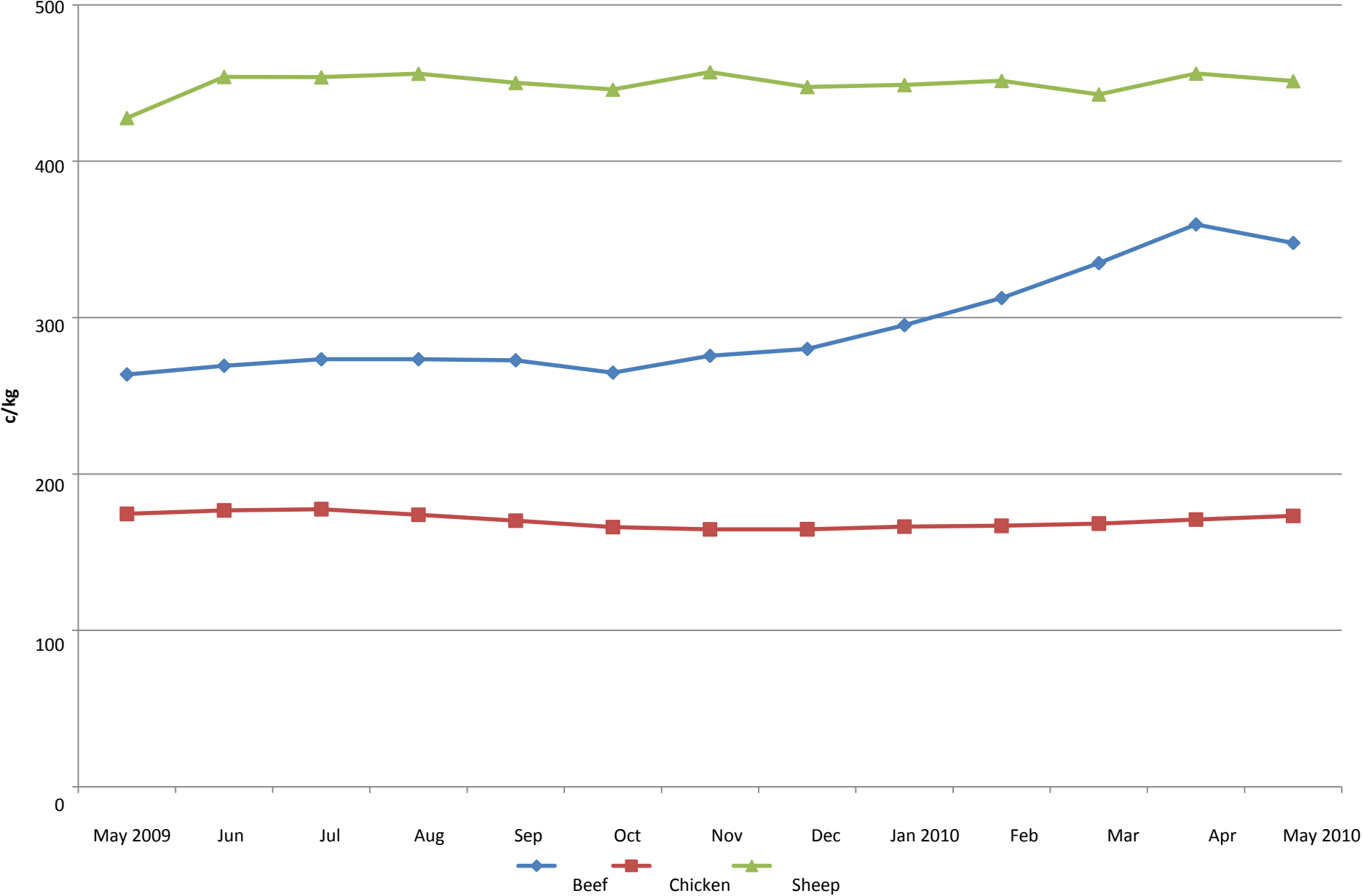
World Soybean Prices

Monthly averages, current prices



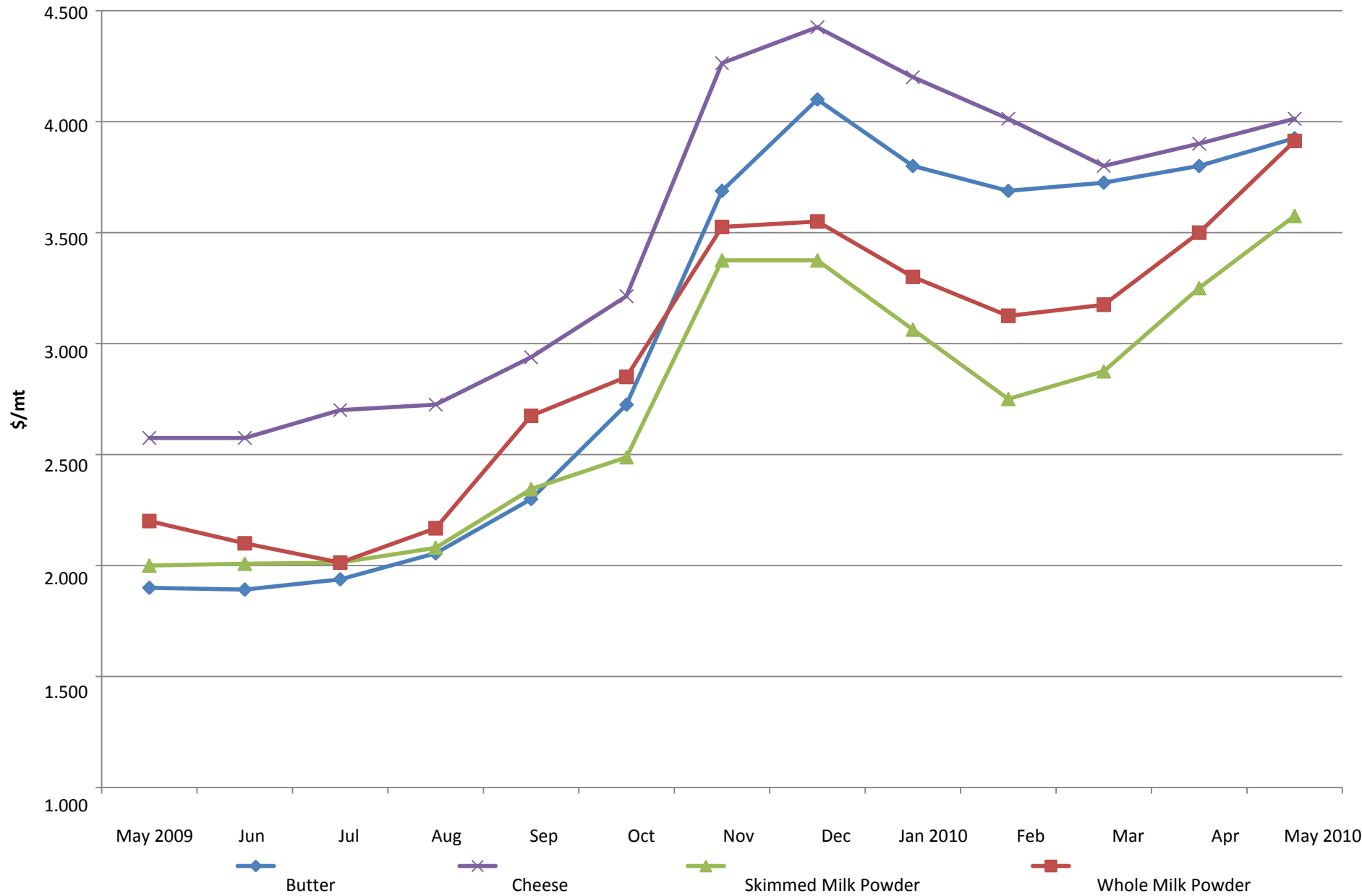
World Meat Prices

Monthly averages, current prices



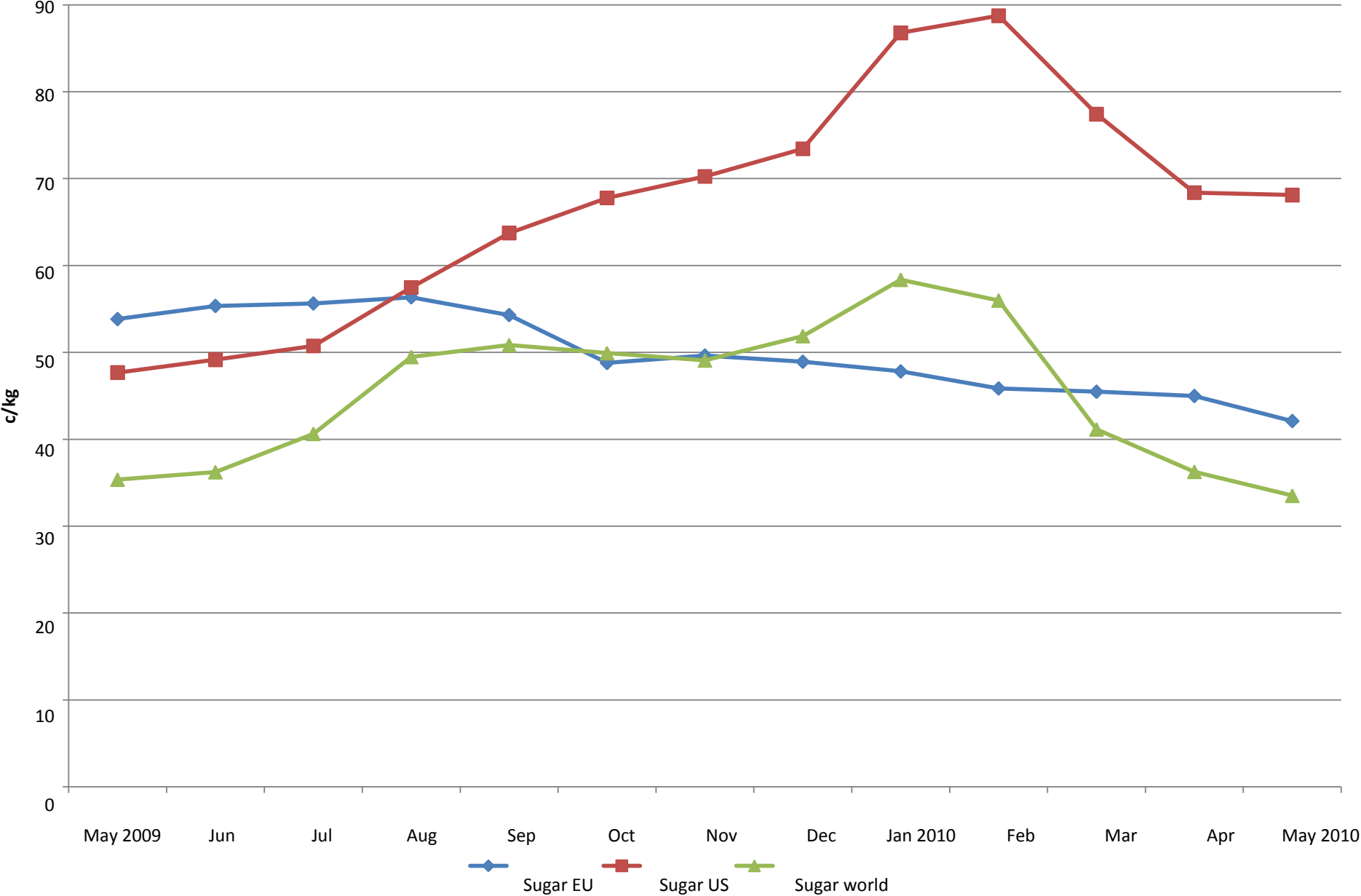
World Dairy Prices

Monthly averages, current prices



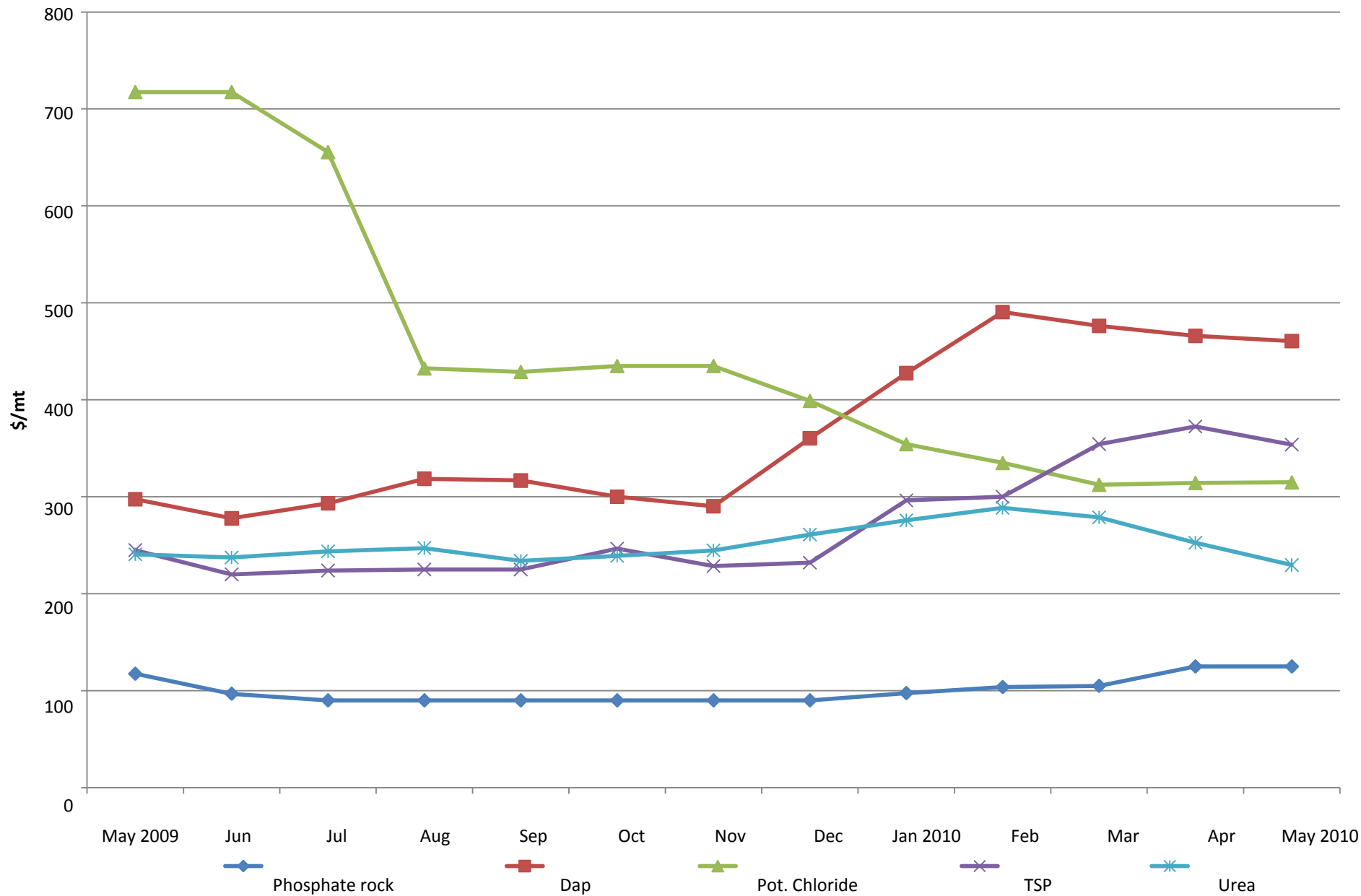
World Sugar Prices

Monthly averages, current prices



World Fertiliser Prices

Monthly averages, current prices



Crude oil Price
Monthly averages, current prices

